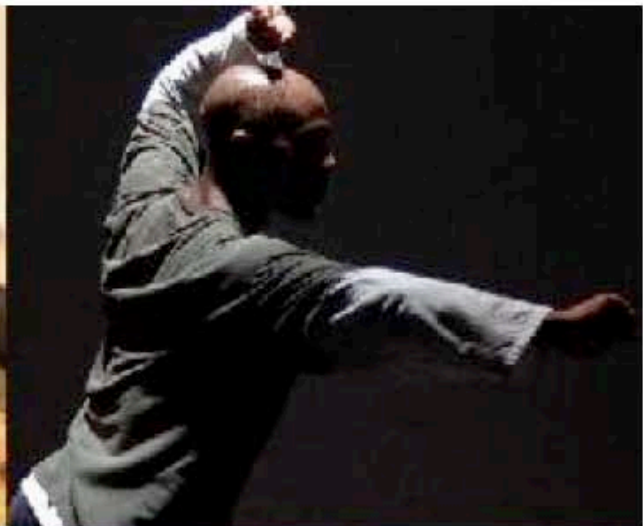


# Summer Newsletter

**23rd  
May  
2007**

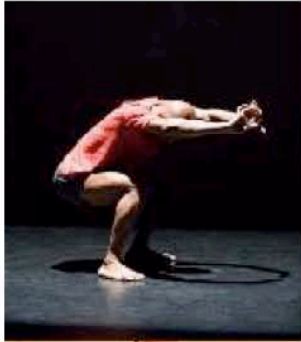


Clockwise from top left: Jess Curtis, Francis Angol, Phillip Zarrilli Summer Shift 2000,  
Reckless Sleepers Summer Shift 2005

## **JUNE DANCE AND MOVEMENT WORKSHOPS:**

**Precision Contact With Jess Curtis & Maria Francesca Scaroni**

**Contemporary African Dance With Francis Angol**



In June, CPR presents an exciting double-bill of contemporary dance workshops-for dancers who want to extend their range and form as well as for those with little experience but who like to move!

## **PRECISION CONTACT WITH JESS CURTIS & MARIA FRANCESCA SCARONI**

**9 June | 11:00 am - 4:00 pm | £40/ £20 | The Foundry, CPR**



Contact Improvisation is an improvisational dance form utilizing physical principles such as touch, momentum, gravity, friction, resistance, counterbalance, lifting and falling. Primarily practiced as a duet form, it trains the senses and reflexes towards nuanced communication through touch, and the playful interaction of weight and momentum in space. The dancers work at the speed of reflex, tuned to the speed

of falling.

**PRECISION CONTACT** is a skills-based workshop for movers who want to increase the awareness and precision in their dance. Participants will address and practice 1) sustaining a clear point or points of contact, 2) the modulation of speed and pressure, 3) control during inversion, supporting and riding, 4) sensitivity to the floor, 5) integration of multiple foci, and 6) extending the variety of qualities in your dancing and your ability to move easily and intentionally between them.

*'The dancers work at the speed of reflex, tuned to the speed of falling.'* Paraphrased from Steve Paxton.

**JESS CURTIS (USA)** is the choreographer and director of San Francisco based dance company Jess Curtis/Gravity. His work transcends interdisciplinary boundaries, integrating contemporary dance, performance, improvisation, aerial acrobatics, music and physically and culturally diverse collaborators.

**MARIA FRANCESCA SCARONI (Italy)** is a performer and teacher whose work with Manuela Bondavalli Danza (Italy) has rooted her dance practice in release-based contemporary techniques and Contact Improvisation. She joined Jess Curtis/Gravity in 2004.

[www.iesscurtisgravity.org](http://www.iesscurtisgravity.org)

## **CONTEMPORARY AFRICAN DANCE WITH FRANCIS ANGOL**

**16 & 17 June | 10:00 am - 5:00 pm | £80/ £40 | The Foundry, CPR**

**CONTEMPORARY AFRICAN DANCE** is a two-day workshop that introduces African dance from a contemporary perspective. It draws from the main African dance forms--Ghanaian, Ivorian, Nigerian, Senegalese and South African--as the basis of its movement and dance vocabulary--as well as Contemporary, Caribbean and Jazz dance styles. Participants will learn a unique yet accessible articulation of African dance, one that is rooted in the traditional but informed by present forms.

**FRANCIS ANGOL (UK)** is an established choreographer, performer and tutor of Contemporary African Dance. He is currently the Artistic Director of Movement Angol and Director of Dance at Islington Arts Factory (North London). Francis has been guest artist in residence in many countries including Jamaica and Nigeria, and his choreographic work has been performed to packed audiences at the renowned Sadler's Wells in

London.

**For more information or to book, please call CPR at (0) 1970 622 133 or email [cprwww@aber.ac.uk](mailto:cprwww@aber.ac.uk)**

## **THE SUMMER SHIFT 2007**

**Guest Artists: Geraldine Pilgrim, Mike Pearson, Simon Thorne With Ingrid Von Wantoch Rekowski, Marisa Carnesky, Ric Jerrom And Brian Popay**



Geraldine Pilgrim 'Stargazer'

With a range of high quality workshops and performance laboratories led by some of the world's leading practitioners, The Summer Shift offers the opportunity to take time out and away from the usual pressures of everyday life to explore your creative practice amongst like-minded participants from around the world.

### **MIKE PEARSON 7-9 JULY RAT THEATRE WORKSHOP**

In celebration of the work of one of the most physical theatre groups in the UK and in memory of recently deceased company members, Mike Pearson leads a three-day intensive workshop on **RAT Theatre's** bio-mechanic exercises and processes of devising. The work will be physically arduous and emotionally demanding but also deeply rewarding; the intention is to create a short group performance for public showing.

### **RIC JERROM AND BRIAN POPAY (NATURAL THEATRE) 2:00pm 10 - 1:00pm 14 JULY ALL THE WORLD'S A PLAYGROUND: INTERACTIVE THEATRE AS PLAYFULNESS IN PUBLIC SPACE**

The workshop will be based on the unconventional performance style(s) of the Natural Theatre Company. After a short illustrated lecture participants will investigate turning ideas into Art, Art into actions, entertainment and engagement. As a group you will pursue the achievement of impact through diverse means. In particular, looking at the geography of performance in public spaces and how 'place' can call a piece of theatre into being. There will be an emphasis too, on such aspects of Interactive Theatre as gender; number; visual content; and character. Think "Happenings" and bring a sense of fun! We shall animate public space where "every rehearsal is a performance, every performance, a rehearsal" performing in a wide-range of non-traditional theatre locations - indoors and out.  
[www.naturaltheatre.co.uk](http://www.naturaltheatre.co.uk)

**GERALDINE PILGRIM**

**7-8 JULY**

**OBJECTS AND ATMOSPHERES – AN INTRODUCTION**

A two-day introductory workshop that explores creating atmospheres, working with objects and examining the use of space in site-specific performance.

**GERALDINE PILGRIM**

**10-14 JULY**

**OBJECTS AND ATMOSPHERES –DEVISING/SITE-SPECIFIC**

A five-day workshop that examines creating and devising site-specific performance. Participants will work individually and collaboratively in both exterior and interior sites; exploring devising work through creating atmospheres and environments using objects and ways of developing narratives that are inspired by site. The workshop is for emerging and experienced practitioners who are interested in exploring, developing and creating site-specific environments as well as creating narrative often non-verbally through working with objects and atmospheres. It is also a development for participants of the two day introductory workshop

[www.corridorperformance.org](http://www.corridorperformance.org)

**MARISA CARNESKY**

**16-18 JULY**

**CARNIVALESQUE EXPERIMENTS: BURLESQUE, MAGIC, CIRCUS AND PERFORMANCE INPROTEST**

Mixing practical and theatrical work, using rare and exciting performance footage and articles, specific props, objects, elements of costume, images and music, Marisa Carnesky will work with participants to enable them to build pieces of devised performance.

Since 2004 when Carnesky premiered her groundbreaking and critically acclaimed multimedia theatrical dark ride 'Carnesky's Ghost Train'

(<http://www.carneskysghosttrain.net>) that toured the UK from Bangladeshi Brick Lane, to Glastonbury Festival, to Trafalgar Square, Marisa Carnesky has been much in demand for her thrilling genre defying performances. Drawing on Marisa's fascination with Victorian melodrama, sideshow freakery and female erotica, creating a dark, fairy-tale atmosphere reminiscent of Angela Carter, *Carnesky's Ghost Train* was part art installation, part visual theatre and part fairground ride - a purpose-built train whisking audiences 20 at a time through a magical environment of optical illusions and performance vignettes.

**SIMON THORNE & INGRID VON WANTOCH REKOWSKI**

**16-18 JULY**

**VOICES IN ARCADIA**

This workshop explores devising with sound, song, and music to create a kind of mind's-eye-theatre for the ears that is resonant with the modern world and will also explore how engagement with a particular site location can be retrieved as approaches to soundscape composition. Taking the idea of Arcadia and the nostalgia of Paradise as our point of entry, we will be exploring ideas around the construction of Nature and the emergence of mythologies. What if we take these as raw materials? What stories and narratives can we generate? Taking time to explore the specific location of Hafod near Cwmystwyth, we will be exploring strategies for composing image, music and text that are extracted from site research. We will be exploring strategies for staging sonic performance using our 'natural' voices and found sound sources.

Joining Simon Thorne in leading this exploration will be French-German director Ingrid von Wantoch Rekowski, whose Belgian company, Lucilia Caesar ([www.luciliacaesar.be/](http://www.luciliacaesar.be/)), works with the theatricality of choir, polyglot language, and painting to give access to musical forms that in turn give life to archetypes, living pictures and transformational metamorphosis. The text develops beyond words, situations and characters to harmonies, images and choreographic structures instead. The outcome is a unique theatre for the ears - music for the eyes.

The workshop is aimed at theatre practitioners who are interested in exploring notions of sonic performance as well as musicians who are interested in exploring theatre as a compositional tool in relation to musical performance and multi-disciplinary artists who are interested in exploring sonic performance within the context of site related work. It should be stressed that no prior musical expertise is necessary to participate in the workshop.

### **BOOKING INFORMATION:**

You can sign up for the entire Summer SHIFT programme, 7 - 18 July - and choose your own pathway through 10 days of workshops.

It may be that you are unable to attend for the full programme and wish to come for only one or two workshops, but if you have the time the accumulative experience of a full Summer Shift goes a long way and is excellent value for money.

Places are limited and early booking is advised. Workshops must be booked in advance and each workshop followed for its full term.

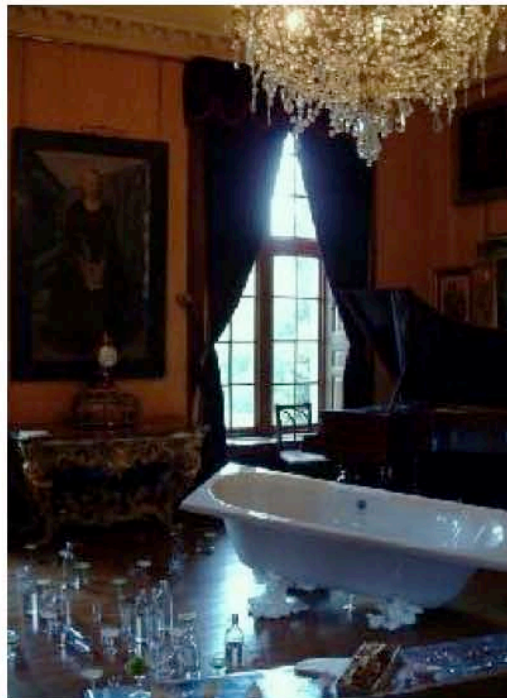
To make a booking, please complete the Summer Shift booking form and return it to the CPR accompanied by a short letter of application stating your choice of workshop(s) with a short description of your interest(s) and experience, and submitting either payment in full or a deposit of £50. Payments can be made by UK cheque, International Money Order or Credit Card. Feel free to fax or e-mail the same information to us. The booking form is available by email from: [cprwww@aber.ac.uk](mailto:cprwww@aber.ac.uk) or online.

**To Book or for more information on the Summer Shift...**  
<http://www.thecpr.org.uk/projects/summershift.php>

## **EVERYDAY LIFE IN THE FOLDS OF A SERVIETTE: a performative feast directed by Richard Gough**

**5th May, West Dean College, Chichester**

In conjunction with the symposium 'Surrealism Laid Bare: Living in Surrealism', CPR presented Everyday Life in the Folds of a Serviette, a 'performative feast' responding to the spaces, exhibitions and displays of West Dean College. Part-installation, part-promenade and part-performance, the unusual event took the audience-diner through the 'inside' and 'outside' of West Dean; on a journey from the grand staterooms to the fine Victorian glasshouses and finally culminating in a restored barn. It took a surrealist approach to food as a framework that played on the audience-diners' expectations.



The music room, West Dean College

Production Manager: Cathy Piquemal  
Performer-collaborators: Jodie Bray, Gareth Evans, Nesreen Nabil Hussein, Sarah Levinsky, Greg McLaren, Siu-Lin Rawlinson, Anushiye

**More on 'Surrealism Laid Bare: Living in Surrealism...[www.rob cunningham.com](http://www.rob cunningham.com)**

## **WIN A £100 CPR BOOKSHOP VOUCHER OR A YEARS FREE SUBSCRIPTION TO THE PERFORMANCE RESEARCH JOURNAL**

We are in the process of updating our records and communications systems and would like to find the best way of keeping you in touch with information. We would be very grateful if you could update or add your details to our mailing list - online on the 'Contact CPR' page of our website ([www.thecpr.org.uk](http://www.thecpr.org.uk)) or by clicking on the join our mailing list at the botton of this article- so we can send you information specific to your interests and profile by email, and occasionally by post.

As an added incentive, if you update your contact details before the 30<sup>th</sup> of September 2007 you will be entered into **our prize draw and will have the chance to win our first prize of a £100 gift voucher to spend in the CPR Bookshop or one of 2 runners up prizes of one years free subscription to the Performance Research Journal.** We should like to encourage everyone who wishes to keep in touch with us to complete the mailing list sign up form so that we are completely confident of the accuracy and currency of our records. Even if you feel that we have your most recent details please do still enter the draw by updating your records asap. Your details will be kept confidential and will not be passed on to any third party. We are well aware of how easy it is to become inundated by emails so we will be efficacious with our communications, contacting you only with information that matches your interests.

Good Luck!

---

### **Centre For Performance Research (CPR) prize draw rules**

#### Eligibility

- The prize draw is open to individuals, 18 years or over. CPR employees and their families are excluded from entry.
- Only one entry per individual is permitted.
- The required fields (full name and email address) must be complete for an entry to qualify for the prize draw.
- The closing date for the prize draw is 30/09/07. Entries received after the closing date will not be considered.

#### Terms of prize award

- The first prize is a £100 book voucher from the CPR Bookshop; there are two runners-up prizes of one years free subscription to the *Performance Research Journal* - No cash alternative will be offered. CPR reserves the right to substitute prizes of a similar nature and value to those prior listed, in the event of any circumstance whatsoever which result in CPR being unable to offer the prizes.
- The winners will be drawn on the 15<sup>th</sup> October 2007 and notified in writing by the 22<sup>nd</sup> October 2007.
- CPR's decision is final and no correspondence will be entered into in relation to the prize draw.

#### Privacy

- Personal particulars will be used by CPR in order to send winners their prizes. The information will be kept confidential and not be passed on to third parties without prior consent from the prize winners.

## **JOIN OUR MAILING LIST**

## CPR BOOKS - NEW IN!

### ANOTHER ASIA: Rabindranath Tagore and Okakura Tenshin

By Rustom Bharucha

£18.00

CPR Members Price: £15.00

Set against a panoramic background of inter-Asian cultural politics, and drawing on the intersections of the late Meiji period in Japan and the Swadeshi movement in Bengal, this book elaborates on the ideals of Asia catalysed by the meeting of Rabindranath Tagore and the Japanese art historian and curator Okakura Tenshin in Calcutta in 1902.

Weaving through an intricate tapestry of ideas relating to pan-Asianism, nationalism, cosmopolitanism, and friendship, this intellectual history positions the early modernist tensions of the first decades of the twentieth century within—and against—the spectre of a unified Asia that concealed considerable political differences. In addition to countering the imperialist subtext of Okakura's *The Ideals of the East* and *The Awakening of the East* against Tagore's radical critique of *Nationalism*, it inflects the dominant tropes of postcolonial theory by highlighting the subtleties of beauty and the interstices of homosociality and love.

Blurring the narrative modes of fiction and history, this elegant study of Asia moves beyond the strictures of Area Studies to open formative questions around civilizational theory and the possibilities of cross-border cultural and human connectivity. It will be of particular interest to those readers pushing the discursive limits of cultural studies, inter-Asian cultural history, literary theory, performance studies, and globalization.

### THE WAY OF MAGDALENA

By Chris Fry

£13.50

CPR Members Price: £11.50

The Way of Magdalena chronicles the main activities of the first decade or so of The Magdalena Project. Starting with the explosion onto the theatre scene in 1986 of the international women's theatre festival Magdalena '86, the book traces the various lines of development that rippled out from that cathartic event. It examines the work of the founder and Artistic Director, Jill Greenhalgh, and follows how her vision interacted with and inspired more and more women to develop their own work and visions. It explores many of the events that took place within this period, including those which became the first of a series of events, such as the Transit Festivals in Denmark, and the Festivals Voix de Femmes in Belgium. The book also delves behind the scenes to examine the management structures that evolved as The Magdalena Project grew and took on a life of its own. Often using first hand experience and interviews as well as original documentation, the book attempts to recreate and present the ways of thinking that were prevalent at the time. It also brings an objectivity that proffers a useful perspective to readers wishing to find out more about the early years of this still growing international network.



### THE CAT SHOW: CARDIFF ART IN TIME

**Text & edit: André Stitt, Report text: Sam Hasler  
Photography: Tim Freeman & Matt Skelly**

**£12.50**

**CPR Members Price: £10.50**

This publication documents the unique & exhilarating performance art project Cardiff Art In Time, affectionately known as the CAT show. The programme - of time based art curated, produced and directed by TRACE Install-Action Artspace Cardiff - consisted of live performances by 28 of the foremost internationally recognised artists working in the world today. The programme also included lectures by academics and practitioners, a student programme 'Catflaps', selected form art schools in the UK and abroad, an Alumni programme and nightly music events.

Features the work of some of the worlds foremost contemporary performance art exponents including : Justin McKeown , Roddy Hunter, Sinéad O'Donnel,l, Jeffrey Byrd , Eddie Ladd , Arai Shin Ichi , Paul Granjon , Eve Dent, Kira O'Reilly, Matt Cook .Paul Hurley, Heike Roms, Anthony Howell, Arai Shin Ichi, The Threatmantics, Alastair MacLennon , Phil Babot, Kim Simons, Tim Bromage, Richard Dedomenici, Robin Deacon, Jamie McMurry, Jacuzzi Junta, The Panacea Society,Shaun Caton, Ointment, Julie Andrée T. , Anne Bean, Gustáv ütö , Silvia Ziranek , Clemente Padín, The Heavy Quartet, Richard Powell, Lee Hassall180 pgs full colour throughout

**You can order direct from our website - or by contacting [Siu-lin Rawlinson](#):**

**phone - +44 (0)1970 622133 ext: 2148**

**To find out about our overseas postal rates or our bulk order discounts please get in touch. Save money on all your performance books and become a CPR Associate or Full member!**

**The Centre for Performance Research  
Bookshop...[www.performancebooks.co.uk](http://www.performancebooks.co.uk)**

## **FIVE BOOKS THAT INSPIRED BY BOBBY BAKER**

Why do artists do what they do? What compels them? We asked performance artist Bobby Baker to list the top five books that have inspired her:

- *Ballet Shoes* by Noel Streatfeild
- *Pride and Prejudice* by Jane Austen
- *A Room of One's Own* by Virginia Woolf
- *Touched With Fire: Manic-depressive illness and the artistic temperament* by Kay Redfield Jameson
- *The Letters of Vincent Van Gogh*: Penguin Classics



How to Live by Bobby Baker

Photo credit - Andrew Whittuck

Bobby Baker is a performance artist based in London. During the last three decades she has produced an extensive repertoire of work principally concerned with an exploration of aspects of daily life and human behaviour. She has worked in a variety of media including food, site-specific installation, radio, TV and drawing.

Major works include "An Edible Family in a Mobile Home" 1976, "Packed Lunch" 1979, "Drawing on a Mother's Experience" 1989, "The Daily Life Series" 1991-2001 - five shows including "Kitchen Show" 1991 and "Box Story" 2001. Her work has been shown widely in the UK and abroad.

Her major production "How To Live" was launched at the Barbican London in 2004. "How to Live" went back to the Barbican Theatre for 4 performances in September 2006, followed by a national tour. The radio version of "How to Live" was broadcast on BBC Radio 4 Afternoon Play in April 2006 and a DVD with a one-to-one "How to Live" therapy session was released also in April 2006.

In 2005 Bobby Baker was awarded an AHRC Fellowship in the Creative and Performing Arts with Queen Mary University of London. Among several of her Fellowship projects, Bobby is working on a publication, a retrospective of her 30-year career, to be launched this autumn, and her new major project entitled "A Model Family" on the subject of mental health in the family. [www.bobbybakersdailylife.com](http://www.bobbybakersdailylife.com)  
(Biography courtesy of Artsadmin)

## CPR CONTACT DETAILS

**Centre For Performance  
Research (CPR)**

**The Foundry/ Y Ffowndri**

**Penglais Campus,**

**Aberystwyth,**

**Wales,UK**

**SY23 3AJ**



**Tel: +44 (0)1970 622 133, Fax:  
+44 (0) 1970 622 132**

**Email: [cprwww@aber.ac.uk](mailto:cprwww@aber.ac.uk)**

, Web: [www.thecpr.org.uk](http://www.thecpr.org.uk) The Centre for Performance Research at Aberystwyth is a joint venture of The University of Wales Aberystwyth and Centre for Performance Research Ltd, working in close association with UWA Department of Theatre, Film and Television Studies.

Mae'r Centre for Performance Research yn Aberystwyth yn fenter ar y cyd rhwng Prifysgol Cymru Aberystwyth a Centre for Performance Research Cyf, yn gweithio'n glôs ar y cyd ag Adran Astudiaethau Theatr, Ffilm a Theledu PCA.

Centre for Performance Research Ltd works with the support of the Arts Council of Wales and is an Educational Charity (No. 701544) limited by guarantee (Reg. No. 231 5790).

Mae Centre for Performance Research Cyf yn gweithio gyda nawdd Cyngor Celfyddydau Cymru ac mae'n Elusen Addysgiadol (Rhif 701544) gyfyngedig gan warant (Rhif Cof. 231 5790).

## ACCESS INFORMATION

A large print or audio version of any publicity material is available on



request.

### The Foundry Facilities -

- Disabled parking is available directly behind the building.
- Wheelchair access to front entrance via sloping ramp.
- Wheelchair accessible toilets on all floors.
- Wide lift providing access to all floors.
- Guide dogs are Welcome.



The Centre for Performance Research (CPR) is a pioneering and multi-faceted theatre organisation located and rooted in Wales, working nationally and internationally. CPR produces innovative performance work: arranges workshops, conferences, lectures and master classes (for the professional, the amateur and the curious); curates and produces festivals, expositions and exchanges with theatre companies from around the world; publishes and distributes theatre books, as well as the journal Performance Research, and houses a resource centre and library that specializes in world theatre and performance and maintains an archive on contemporary Welsh performance.